

**REPORT ON STRONG WIND AND
THUNDERSTORM OCCURRENCE AT TAMAN
MEDAN, PETALING JAYA, SELANGOR
ON 15 AUGUST 2010**



Prepared by:

**Malaysian Meteorological Department
Ministry of Science, Technology and Innovation**

16 August 2010

INTRODUCTION

This report is prepared following the thunderstorm incident with strong winds which hit several places around Lembah Kelang in the evening of 15 August 2010. According to media report, part of the roof of Pangsapuri Desa Sepakat in Taman Medan, Petaling Jaya was blown off and caused damages to sixteen vehicles parked near the apartment building. In the incident which occurred around 3.30 pm, no injury was reported.

RAINFALL AMOUNT ANALYSIS FROM 2:00 PM UNTIL 7:00 PM ON 15 AUGUST 2010

Rainfall amount recorded in principal meteorological stations and AWS stations in Selangor and Kuala Lumpur is shown in Table 1 and Table 2 respectively.

State	Station	Time					
		2:00 pm	3:00 pm	4:00 pm	5:00 pm	6:00 pm	7:00 pm
Selangor	Sepang KLIA	0.0	0.0	0.0	0.0	0.6	0.0
	Subang	0.0	0.0	3.6	0.2	0.0	0.0
	Petaling Jaya	0.0	0.0	28.2	Trace	0.0	0.0

Trace : Rainfall amount < 0.1mm

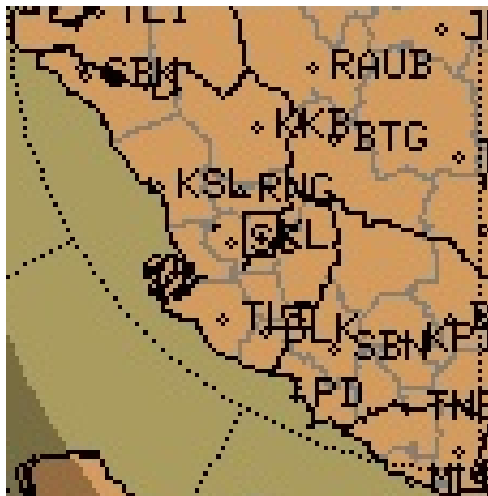
Table 1: Rainfall amount (mm) recorded in principal meteorological stations in Selangor.

State	Station	Time					
		2:00 pm	3:00 pm	4:00 pm	5:00 pm	6:00 pm	7:00 pm
Kuala Lumpur	FRIM Kepong	0.0	0.0	0.0	0.0	0.0	0.0
Selangor	Pertanian Kalumpang Hulu Selangor	0.9	2.7	0.0	0.0	0.0	0.0
	Ladang Jalan Akob Kelang	0.0	0.0	0.0	0.0	0.0	0.0
	MARDI Jalan Kebun Kelang	0.0	0.0	1.7	0.0	0.1	0.0
	Pertanian Tanjung Karang Kuala Selangor	0.0	0.0	0.0	0.0	0.0	0.0
Selangor	Estate Bukit Rotan Petaling	0.0	0.0	0.0	0.0	0.0	0.0

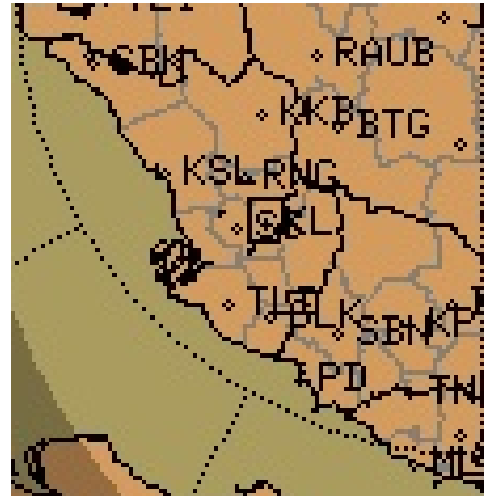
	Pertanian Serdang Petaling	0.0	0.0	1.0	26.0	0.3	0.0
	Pertanian Sg. Besar Sabak Bernam	0.0	0.0	0.0	0.0	0.0	0.0

Table 2: Rainfall amount (mm) recorded in AWS stations in Selangor and Kuala Lumpur

WEATHER RADAR IMAGERIES FROM 3.00 PM UNTIL 7.00 PM ON 15 AUGUST 2010 FOR SELANGOR AND KUALA LUMPUR



3:00 PM, 15 August 2010
No rain cloud is identified



3:10 PM, 15 August 2010
No rain cloud is identified



3:20 PM, 15 August 2010
Rain/thunderstorms are identified
over Kuala Lumpur



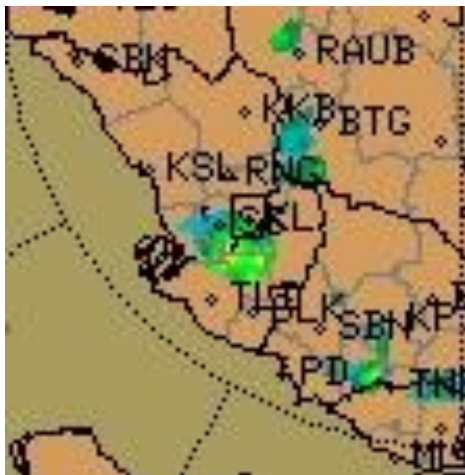
3:30 PM, 15 August 2010
Rain/thunderstorms are identified
over Kuala Lumpur



4:00 PM, 15 August 2010
 Rain/thunderstorms are identified over Klang Valley and Kuala Lumpur



4:10 PM, 15 August 2010
 Rain/thunderstorms are identified over Klang Valley and Kuala Lumpur

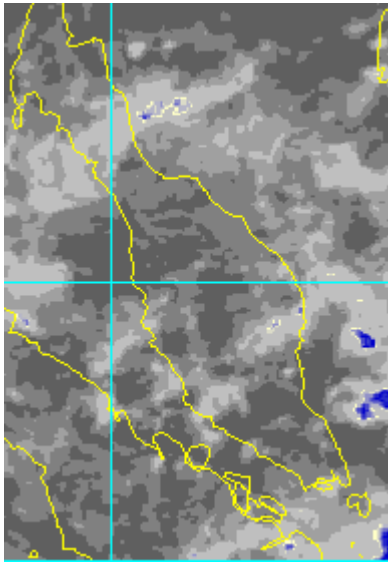


4:20 PM, 15 August 2010
 Rain/thunderstorms intensity has reduced



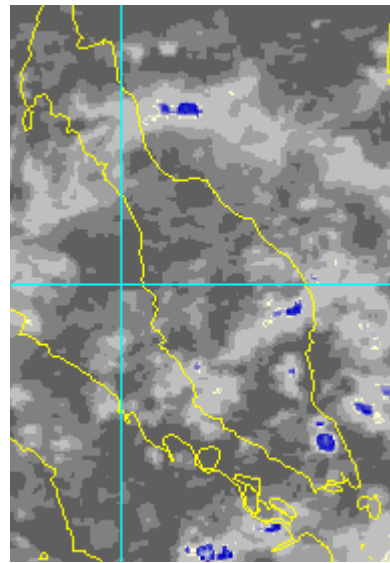
4:30 PM, 15 August 2010
 Rain/thunderstorms intensity has reduced further

WEATHER SATELLITE IMAGERIES FROM 2.10 PM UNTIL 7.10 PM ON 15 AUGUST 2010 FOR PENINSULAR MALAYSIA



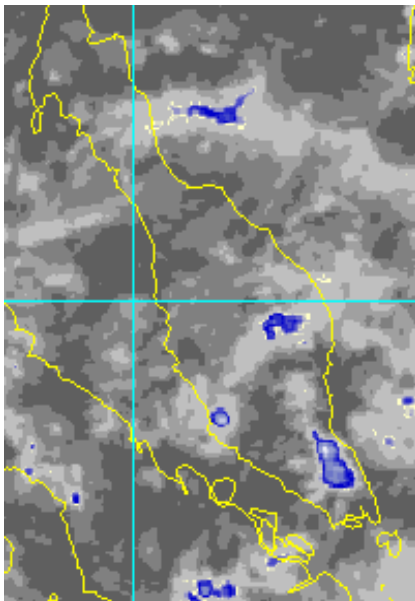
2.10 pm, 15 August 2010

No rain cloud is identified over Selangor and Kuala Lumpur.



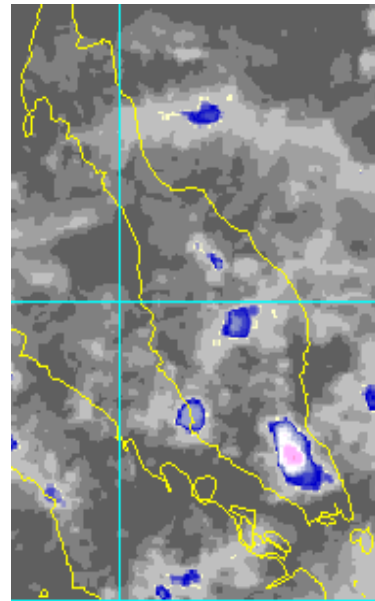
3.10 pm, 15 August 2010

Rain cloud patches are identified over Selangor, Terengganu, Pahang and western Johore.



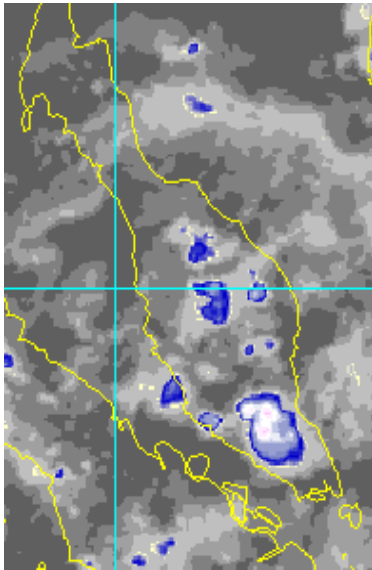
4.10 pm, 13 August 2010

Rain cloud patches developed over Selangor, Kuala Lumpur, Terengganu, Pahang and Johore.



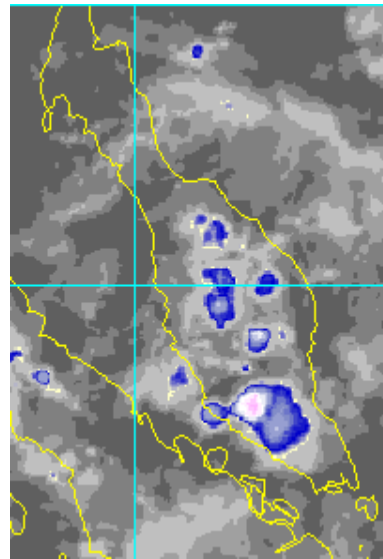
5.10 pm, 13 August 2010

Rain cloud patches intensified over Selangor, Kuala Lumpur, Terengganu, Pahang and Johore.



6:10 pm, 15 August 2010

Rain cloud patches reduced over Selangor. Meanwhile thick rain cloud patches are still observed over Malacca and Johore.



7:10 pm, 15 August 2010

Rain cloud patches moved offshore of Selangor. Rains in Johore and Malacca still persisted but had moved slightly westward.

WARNING ON THUNDERSTORMS AND HEAVY RAINS THAT WERE ISSUED FOR PENINSULAR MALAYSIA

Date	Time Issued	Type	Location	Valid Period
15/08/2010	3.45 pm	Warning on Thunderstorms and Heavy Rains	Kuala Lumpur, Selangor (Gombak, Petaling and Hulu Langat), Johore (Kluang, Mersing and Segamat) and Pahang (Rompin and Pekan)	3.45 pm – 6.00 pm, 15/8/2010
15/08/2010	6:30 pm	Warning on Thunderstorms and Heavy Rains - Updated	Negeri Sembilan (Seremban, Port Dickson, Kuala Pilah, Rembau, Jempol and Tampin) and Johore (Segamat, Ledang, Muar and Batu Pahat)	6:30 pm - 11.00 pm, 15/8/2010

CONCLUSION

The convergence of westerly winds and easterly winds over Peninsular Malaysia caused unstable atmospheric condition and this encouraged active thunderstorm cells formation, especially over the west coast states of the Peninsular. Thunderstorm and heavy rain occurrence with strong winds caused damages to properties in Taman Medan, Petaling Jaya, Selangor.