



# EL NIÑO SOUTHERN OSCILLATION (ENSO) STATUS (Updated on 19 March 2025)



- La Niña conditions are expected to persist with a transition to ENSO - neutral likely during February – April 2025 with a 75% probability as shown in Figure 1.
- Oceanic Niño Index (ONI) for December – January – February is  $-0.6^{\circ}\text{C}$  and the latest weekly sea surface temperature anomaly in the ENSO (Niño 3.4) monitoring area is  $-0.3^{\circ}\text{C}$  (Figure 2).
- People are advised to stay up-to-date with the latest weather updates as well as get the latest weather information through the MET Malaysia website, myCuaca app and social media.

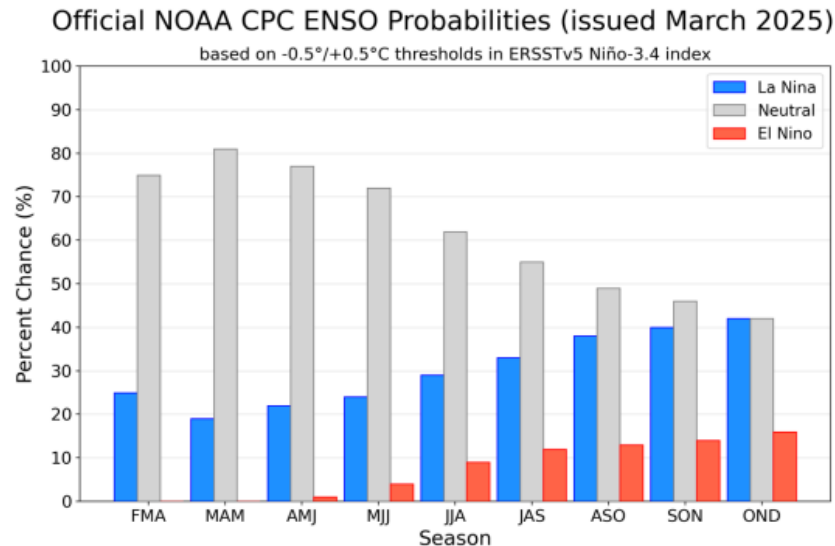


Figure 1: ENSO probabilities for the Niño 3.4 sea surface temperature index

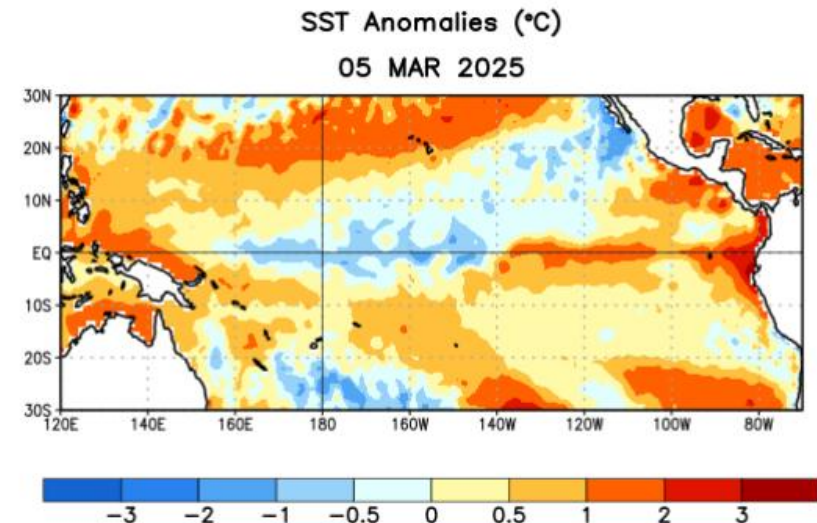


Figure 2: Average sea surface temperature (SST) anomalies ( $^{\circ}\text{C}$ ) for the week centered on 05 March 2025